



## MetroAN Fusion Splicer SKYCOM T-308X

Applicable Fibers	SM, MM, NZ-DS, EDF, Pigtail, FTTH drop cable SC/LC/FC connector (optional function)
Average Splice Loss	0.02dB(SM), 0.01dB(MM), 0.04dB(NZDS), 0.04dB(EDF)
Return Loss	≥60dB
Quick splicing time	8 seconds
Quick heating time	18 seconds
Operating Language	Chinese, English, French, Portuguese, Spanish, Russian
Operating Conditions	-10~+50°C(operation temperature),0~95% RH(humidity), 0~5000m(altitude)
Monitor	Dual cameras, 90 ° bi-dirctional view 4.3 inches high resolution colorful LCD display
Fiber Image	X or Y Separately 400 times or Simultaneously 200 times
Estimated Splice	Available
Cleaving angle	Available
Automatic setting	Automatic camera and motor forward adjustment
Power Supply	Inner lithium battery: 11.1V, 5.2 Ah, 5200mAh, Up to 180 times splice and heat
Dimensions	120(W)*120(D)*130(H)mm
Weight	1.29kg(without battery pack)





## Portable Fusion Splicer SKYCOM T-307

Applicable Fibers	SM, MM, NZ-DS, EDF, Pigtail, FTTH drop cable SC/LC/FC connector (optional function)
Average Splice Loss	0.02dB(SM), 0.01dB(MM), 0.04dB(NZDS), 0.04dB(EDF)
Return Loss	≥60dB
Quick splicing time	8 seconds
Quick heating time	18 seconds
Operating Language	Chinese, English, French, Portuguese, Spanish, Russian
Operating Conditions	-10~+50°C(operation temperature),0~95% RH(humidity), 0~5000m(altitude)
Monitor	Dual cameras, 90 ° bi-dirctional view, 4.3 inches high resolution colorful LCD display
Fiber Image	X or Y Separately 400 times or Simultaneously 200 times
Estimated Splice	Available
Cleaving angle	Available
Automatic setting	Automatic camera and motor forward adjustment
Power Supply	Inner lithium battery: 11.1V, 5.2 Ah, 5200mAh, Up to 180 times splice and heat
Dimensions	120(W)*120(D)*130(H)mm
Weight	1.17kg(without battery pack)





# Multi-function Fusion Splicer SKYCOM T-207X/H

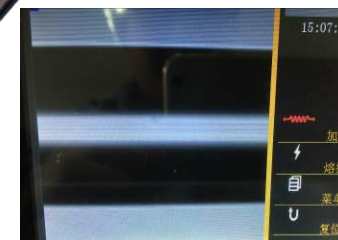
Applicable Fibers	SM, MM, NZ-DS, EDF, Pigtail, FTTH drop cable SC/LC/FC connector (optional function)
Average Splice Loss	0.02dB(SM), 0.01dB(MM), 0.04dB(NZDS), 0.04dB(EDF)
Return Loss	≥60dB
Tension Test	2.0N(200gf)(Standard)
Typical splicing time	8 seconds
Typical heating time	25 seconds
Splicing Program	50 groups
Operating Language	Chinese, English, French, Portuguese, Spanish, Italian, Russian, Indonesian,
Operating Conditions	-10~+50°C(operation temperature),0~95% RH(humidity), 0~5000m(altitude)
Power Supply	AC adaptor: 100~240V input voltage, 50/60Hz; 12V, 5A output voltage(DC) Inner lithium battery: 11.1V, 5.2Ah
Monitor	5 inches high resolution colorful LCD display
Fiber Image Magnification	X or Y axis Separately views with 400 times magnification, or Simultaneously 220 times
Storage of Splice Result	6,000 groups of latest splice results
Optical Fiber Fixture	3-in-1 cutting fixture; Multipurpose 1+N fixture (Optional for SC/LC/FC connector)
Dimensions	130(W)*135(D)*130(H)mm; Package size: 52*32*30cm
Weight	2.1kg (without battery pack)



**SKYCOM®**

## FTTX Fusion Splicer SKYCOM T-208H

Applicable Fibers	SM, MM, NZ-DS, EDF, Pigtail, FTTH drop cable SC/LC/FC connector (optional function)
Average Splice Loss	0.02dB(SM), 0.01dB(MM), 0.04dB(NZDS), 0.04dB(EDF)
Return Loss	≥60dB
Tension Test	2.0N(200gf)(Standard)
Typical splicing time	9 seconds
Typical heating time	30 seconds
Splicing mode	full-automatic , automatic, manual
Heating mode	automatic, manual
Splicing Program	50 groups
Operating Language	Chinese, English, French, Portuguese, Spanish, Italian, Russian, Indonesian,
Operating Conditions	-10~+50°C(operation temperature),0~95% RH(humidity), 0~5000m(altitude)
Power Supply	AC adaptor: 100~240V input voltage, 50/60Hz; 12V, 5A output voltage(DC) ;Inner lithium battery: 11.1V, 5.2Ah
Monitor	5 inches high resolution colorful LCD display
Fiber Image Magnification	X or Y axis Separately views with 360 times magnification, or Simultaneously 220 times
Storage of Splice Result	6,000 groups of latest splice results
Optical Fiber Fixture	3-in-1 cutting fixture; Multipurpose 1+N fixture (Optional for SC/LC/FC connector)
Dimensions	130(W)*135(D)*130(H)mm; Package size: 52*32*30cm
Weight	1.75kg (without battery pack)



T-208H display



# OTDR T-OT300

## SPECIFICATIONS

Model	T-OT300	
Dynamic (1)	32/30dB	
Wavelength (±20 nm)	1310/1550	
Display	3.5' TFT LCD touch screen	
Light source type	LD	
Optical interface	FC/UPC	
Distance range (km)	0.3、1、5、10、30、60、120	
Pulse width (ns)	5、10、20、40、80、160、320、640、1280、2560、5120、 10240、20480、Auto	
Measurement duration	15s、30s、1min、2min、3min	
Attenuation dead zone (2)	10m	
Event dead zone	1.8m	
Distance measurement precision	±(1 m + 5 x 10 <sup>-5</sup> x Distance + Sampling interval)	
Data storage	> 60000 test traces	
Communication interface	USB	
VFL	Wavelength	650nm
	Output power (dBm)	≥ -3
	Test distance (km)	3
Optical Communications Test	YES	





## MINI OTDR T-OT360D

Technical Specifications	
Wavelength (nm)	1310nm/1550nm±20nm
Dynamic range (dB)	24dB/22dB
Event Blind Zone	3m
ATT Blind Zone	8m
Test Range	500m~60km
Pulse Width	3ns~10us
Ranging accuracy	$\pm (1m + \text{Sampling interval} + 0.005\% \times \text{Test distance})$
Loss accuracy	$\pm 0.05\text{dB/dB}$
Sampling Points	16k~128k
Sampling resolution	0.05m~8m
Reflection accuracy	$\pm 3\text{dB}$
Connector	FC/UPC (Interchangeable SC、ST)
Display	3.5 inch Color LCD
Data Interface	Micro USB
External storage	TF Card
Power Supply	Polymer Li-Battery: 3.7V, 4000mAh Adapter: 5VDC, 2A





## OTDR T-OT750 Series

Technical Specifications				
Model	T-OT750-S-A32	T-OT750-S-AB35	T-OT750-M26	T-OT750-SM28
Wavelength (nm)	1310/1550	1310/1550/1625	850/1300	1310/1550/850/1300
Dynamic range (dB)	32/30	35/33/32	22/26	28/26/22/26
Pulse width (ns)	SM:3ns, 5ns, 10ns, 20ns, 50ns, 100ns, 200ns, 500ns, 1μs, 2μs, 5μs, 10μs, 20μs MM:850mm: 3ns, 5ns, 10ns, 20ns, 50ns, 100ns, 200ns, 500ns, 1us 1300mm: 3ns, 5ns, 10ns, 20ns, 50ns, 100ns, 200ns, 500ns, 1us, 2us			
Dead zone (m)	0.8/4	0.8/4	2/5	SM: 0.8/4 MM: 2/5
Minimum sampling resolution	0.05m			
Maximum sampling point	256,000			
linearity	≤0.05dB/dB			
Loss resolution	0.001dB			
Distance resolution	0.01m			
Monitor	5.6 "TFT LCD 640 * 480			
Battery	7.4V/2500mAh X 2 lithium battery(Aviation certification)			







# OTDR T-OT600

Technical Specifications				
Wavelength (nm)	850/1300	1310/1550	1310/1490/1550	1625
Dynamic range (dB)	23/21	30/38	32/38	30/36
Pulse width (ns)	5、2、40、80、 160、320、640、 1280	5、2、40、80、160、320、640、1280、 2560、5120、10240、20480		
Event blind zone (m)	2m	2m		
Attenuation blind zone (m)	9m	9m		
Linearity(dB/dB)	±0.05			
Loss threshold(dB)	0.05			
Loss resolution ratio(dB)	0.01			
Sampling resolution ratio(dB)	0.125 to 8			
Distance scope(km)	0.3 to 180			
Typical real-time refreshing duration(s)	0.2			





# Optical Power Meter

## SPECIFICATIONS

Model	T-OP300T	T-OP300C
Measurement Range(dBm)	+10~-70dBm	+26~-50dBm
Accuracy *	± 0.2 dB	
Calibrated Wavelengths	850nm / 1300nm / 1310nm / 1490nm / 1550nm / 1625nm	
Resolution	0.01dB	
OPM Connector	2.5mm UPP and FC interchangeable (SC, ST optional)	
VFL Connector	2.5mm UPP	
Reference Value storage	Yes	
Auto Power Off	No operation in 10 minutes (can be canceled), Low battery energy	
Battery Charge	Yes	
Battery Life	Above 100 hours (1800mAH battery)	
Power Supply	AA * 2 batteries or AC/DC power supply adapter	
VFL	T-OP300T-V10 10KM	T-OP300C-V10 10KM





# Optical Light Source

## SPECIFICATIONS

Model	M8	M3	S3	S4	S5	S6
Central Wavelength(nm)	850	1300	1310	1490	1550	1625
Stabilization*	±0.05dB / 1 hour;±0.1dB / 8 hours					
Output Power	> - 6dBm @ 1310nm/1490nm/1550nm/1625nm / > -10 dBm @ 850nm/1300nm					
Modulation	270Hz, 1KHz, 2KHz					
Connector	FC/PC (or customize)					
Auto Power Off	No operation in 10 minutes (can be canceled), Low battery energy					
Battery Charge	Yes					
Power Supply	AA * 2 batteries or AC/DC power supply adapter					





# Visual Fault Locator

## SPECIFICATIONS

VFL200 series	T-VF201	T-VF210	T-VF220	T-VF230
Wavelength	650nm ± 20nm			
Output Power *	> 1mW	> 10mW	> 20mW	>30mW
Dynamic Distance **	>5 km	8~10 km	15~17 km	25~30 km
Glint	2Hz			
Connector ***	2.5mm or 1.25mm Universal connector			
Storage Temperature	-20 -- +60 °C, < 90%RH			
Operating Temperature	-10 -- +50 °C, < 90%RH			
Power Supply	AA * 2			
Weight	80g			







# PON Power Meter

## SPECIFICATIONS

PON module:	T-PO3213
1310 Pass Zone(nm)	1260nm ~ 1360nm
1490 Pass Zone(nm)	1470nm ~ 1505nm
1550 Pass Zone(nm)	1535nm ~ 1570nm
MeasurementRange(dBm)	-40dBm ~ +10dBm
Output power(max)	25dBm
Isolation@ (1310/1490nm)	>40dB
Connatural uncertainty(dB)	±0.5dB
Linearity(dB)	±0.1dB
Passing through insertion Loss(dB)	<1.5dB
Detector Type	InGaAs
Optical Connector	FC/SC/ST Interchangeable/2.5 universal adapter
Fiber Type	SM 9/125um
Measurement Unit	dB/dBm/xW
Resolution (dB)	0.01dB
Power Supply	3pc1.5V battery
Operation Temperature(°C)	-10°C ~ 60°C





# Fiber Identifier

## SPECIFICATIONS

Model	T-FI350
Wavelength Range	800-1700 nm(SM)
Recognizable signal type*	CW, 270Hz±5%,1kHz±5%,2kHz±5%
Detector Type	Ø1mm InGaAs 2pcs
Fiber Type	0.9, 0.25, 2.0, 3.0 mm fiber
Sensitivity	+10 ~ -50dBm
Accuracy *	+10dB to -30 dBm (Continuous Wave)
	+10dB to -25 dBm (Modulated Signal)
LED Indicator	Signal direction; signal frequency (2kHz/1kHz/270Hz); low battery
Temperature	Storage: -20 -- +60 °C, < 90%RH Operating: -10 -- +50 °C, < 90%RH
Power Supply	AA * 2
Size / Weight	196X30.5X27, About 200g





# Fiber Cleaver

## SPECIFICATIONS

Applicable range	Single Core Silex-fiber
Coating Diameter	100~1000um
Fiber Diameter	100~150um
Cleave Length	9~16mm ( $\phi$ 0.25mm). 10~16mm ( $\phi$ 0.9mm)
Dimension	55mm*58mm*52mm (mm)
Weight	0.45kg
Cleaving Angle	$\leq 0.5^\circ$
Blade Life	36000 times



## Buffer Tube Stripper

45-162 | 45-163



- 45-162 Grey buffer tube stripper (For Fiber Applications)
- Use for simplex fiber and a variety of fiber optic cable up to 1/8 inch diameter
- 45-163 Blue buffer tube stripper (For coax Applications)
- Use for Coaxial Cable 1/8 in. to 7/32 in. (5.6mm - 3.2mm) O.D.
- Adjustable blades can be set for any depth to help ensure nick-free strips

## Longitudinal Buffer Tube Slitter



- Tool size(mm):50×40×20; Weight:35g
- Cable can be processed:
  - a.( $\varnothing$ 1.5~ $\varnothing$ 1.9mm);    b.( $\varnothing$ 2.0~ $\varnothing$ 2.4mm);
  - c.( $\varnothing$ 2.5~ $\varnothing$ 2.9mm);
  - d.( $\varnothing$ 3.0~ $\varnothing$ 3.3mm)





## Round Cable Stripper

RCS-114 | RCS-158



- RCS-114 for smaller diameter cables: 0.178 to 1.14 inches (4.5 - 29 mm)
- RCS-158 for larger diameter cables: 0.75 to 1.58 inches (19 - 40 mm)
- Blade depth can be regulated by simply turning the blade housing
- Spiral cut for end stripping or mid-span stripping

## Longitudinal Cable Sheath Slitter KMS-K



- Tool for safe longitudinal slitting of plastic cable sheaths with different thickness
- Applicable either at the beginning or in the middle of the cable. Additional attachable pieces for slitting optic cables and cables with small diameter available
- Attachable piece, grey for cables up to 25 mm

## ACS Armored Cable Slitter



- Easily opens/separates the steel tape armor on fiber optic cable, Unique counter rotation mechanism opens steel tape armor in 21/2 - 31/2 turns allowing for cutting of the armor
- Accommodates steel tape armor from 1-2mm OD .
- 1.5" (38.1mm) outside diameter fits comfortably in your hand

## FTTH TOOL BAG

- 1pcs Cutter
- 1 pcs FTTH stripper for drop cable
- 1 pcs fiber coating stripper
- 1 pcs Visual Fault locator
- 1pcs handheld optical power meter
- 1 bag



## Economy Fiber Optic Cleaning Kit HR-780



- Fibretool Cassette Cleaner FCC-01
- 200X Hand Held Fiber Microscope
- LED inspection flashlight
- 250ml Bottle of Alcohol with locked
- Fiber Cleaning Wipes 7.5×7.5mm, 50/pkg
- Replacement cartridge of FCC-01 cleaner
- 2.5mm fiber optic cleaning stick
- 1.25mm fiber optic cleaning stick
- Pre-Moistened Alcohol Wipes
- Carrying Tool Case(260×140×200mm)



Electrodes



Drop Cable Stripper



Fiber Stripper



Economy Kevlar® Cutter



Fiber Splicing Protective Sleeves



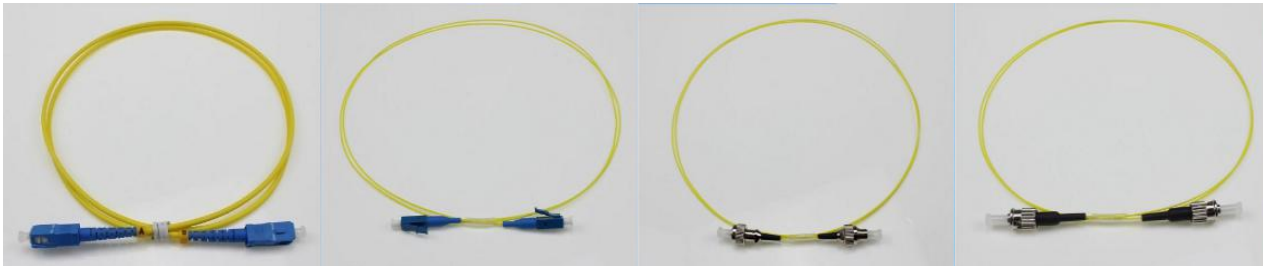
Inner-six angle wrench





# Passive Components

## Patch Cord \ Pigtail



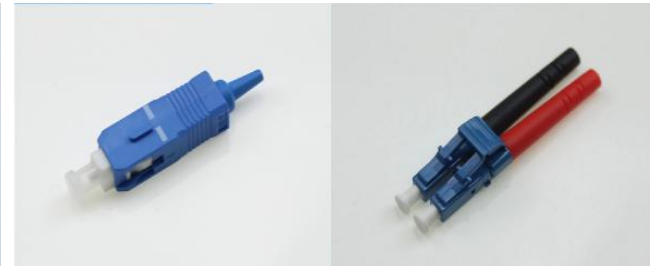
SC

LC

FC

ST

## Connector



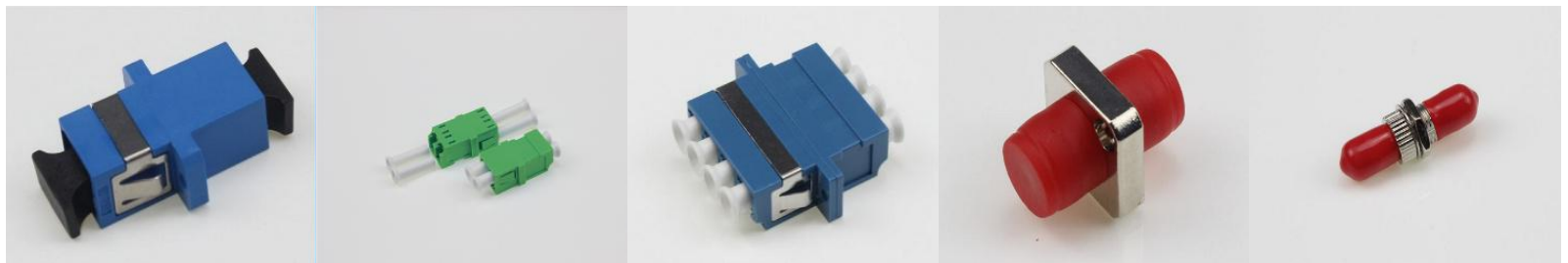
Simplex Connector Duplex Connector

## PLC Splitter



PLC Splitter

## Adaptor



Simplex Adapter

Duplex Adapter

Quad LC Adapter

FC Adaptor

ST Adaptor



## Telecommunication Equipment



Distribution Box



Splice Closure



Termination Box



One-click Cleaner



Dustless paper



Cleaner Box



Clean Air



Inspection Probe



Inspection & Clean Case