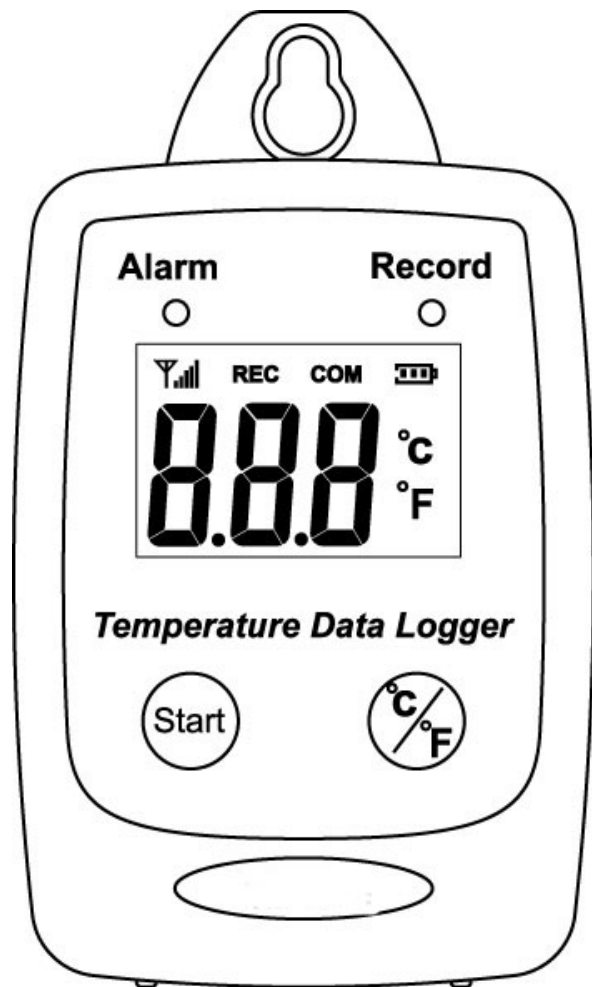


# Temperature Datalogger

## IP 54 Water Proof USB Datalogger



Users Manual

## TABLE OF CONTENTS

<b>FEATURES &amp; SPECIFICATIONS .....</b>	<b>3</b>
<b>APPLICATIONS .....</b>	<b>4</b>
<b>START UP AND GENERAL OPERATION .....</b>	<b>5</b>
LCD Display .....	5
Turn On Temperature Data Logger .....	6
Switch between °C or °F.....	7
Recording Data.....	8
<b>PC SOFTWARE INSTALLATION.....</b>	<b>11</b>
<b>USING PC SOFTWARE .....</b>	<b>12</b>
Setup Screen.....	15
Download Records .....	17
Graphic & Chart Analysis .....	20
Data in Listing Format .....	22
Data Export.....	24

# FEATURES & SPECIFICATIONS

## Features

- Measure °C/°F Temperature
- Datalogging- 50,000 records
- Fast USB download
- Easy- to-Use PC software for parameter settings and data analysis
- Internal Temperature alarm

## Specifications

### Temperature

Type	Thermistor
Measurement Range	-40 to 85°C(-40~185°F)
Accuracy	±1.2°F(0.6°C) from -4 to 122°F(-20 to 50°C) ±1.8°F(1.0°C) all other ranges
Resolution	0.1°C

- Display : 3 digit LCD.
- LED status: red LED of Alarm, green LED of Record.
- Sampling rate: 1 times/3 second.
- Battery : One 3.6V ½ AA lithium battery
- Battery Life :1 year.
- External Power Supply: 5 VDC with 0.5A.
- Operating temperature and humidity : -40 to 85°C(-40~185°F), 0-95%,RH,non-condensing.
- Instrument dimensions :83(L)\*60(W)\*24(H) mm.
- Weight : About 77g.





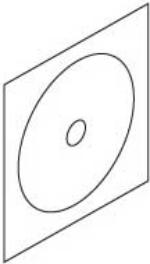
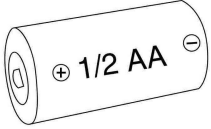
#### **Below -20°C Measurement Notes:**

Please measure -20°C firstly. When the meter shows -20°C and the battery symbol should be more than 2 scales then the measurement can be continued if the temperature is below -20°C. If the battery symbol at -20°C is less than 2 scales, please replace with a new one battery immediately.

## Applications

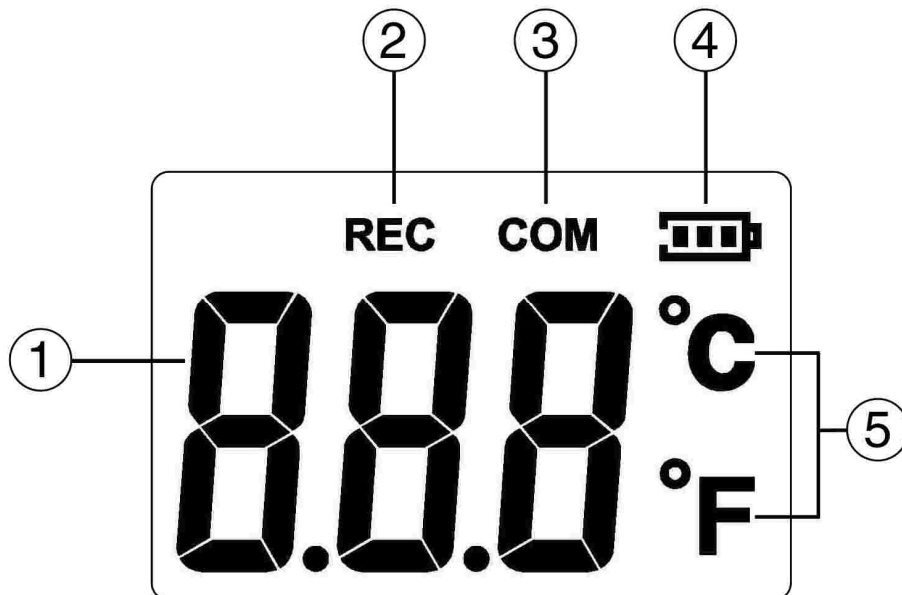
- Building HVAC monitoring.
- Warehouses.
- Refrigerator.
- Clean rooms.
- Freezer.
- Shipping vans.
- Shipping crates.
- Cargo vessels.
- Storage areas.

## WHAT'S IN THE BOX

 A handheld digital temperature data logger. The device has a carrying loop at the top. The front panel features a display showing '8.88' with '°C' and '°F' indicators. Above the display are 'Alarm' and 'Record' indicators. Below the display are 'Start' and 'C/F' buttons. The text 'Temperature Data Logger' is printed below the display.	 A standard USB-A to USB-B cable, coiled.	 A CD-ROM disc shown at an angle.
1. Main Unit	2. USB Cable	3. Installation Disk
 A standard AA battery with a '+' sign on the left end and a '-' sign on the right end. The text '1/2 AA' is printed on the side.		
4. 1/2 AA Battery		

## START UP AND GENERAL OPERATION

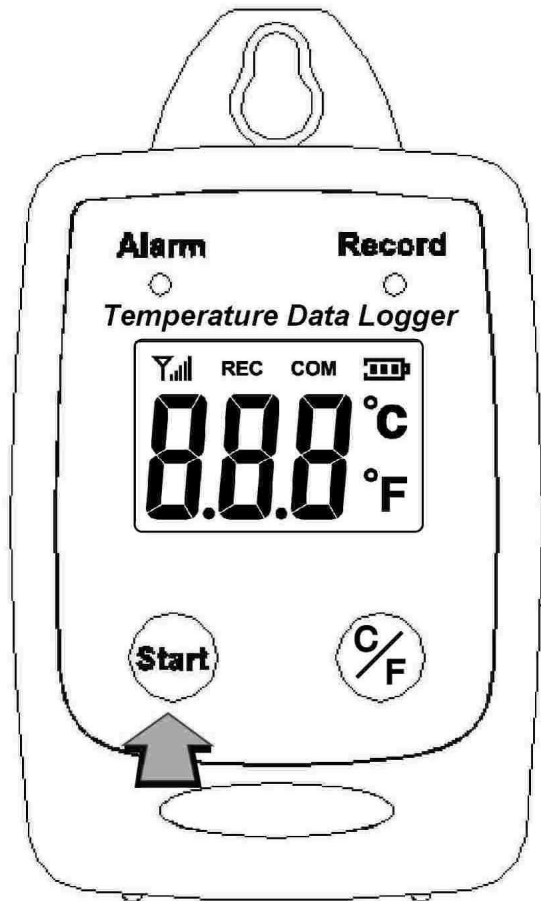
### LCD Display



1.	Temperature Display	4.	Battery Level Indicator
2.	Recording	5.	Unit of Measurement
3.	USB Communication		

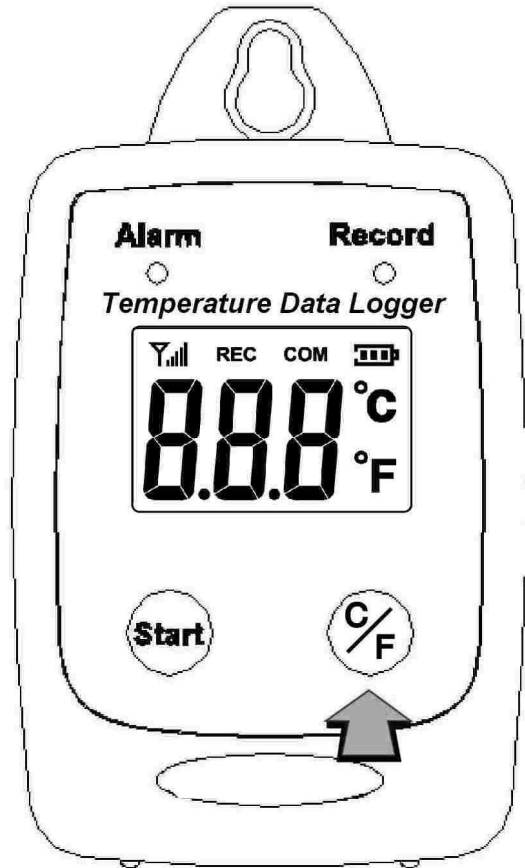
## Turn On Temperature Data Logger


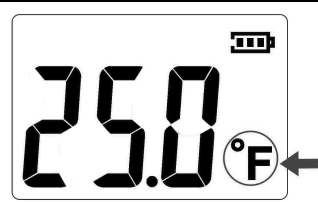
- Press the Start button for 2 seconds to turn on the Temperature Data Logger.
- The unit is ready to use.



Switch between °C or °F

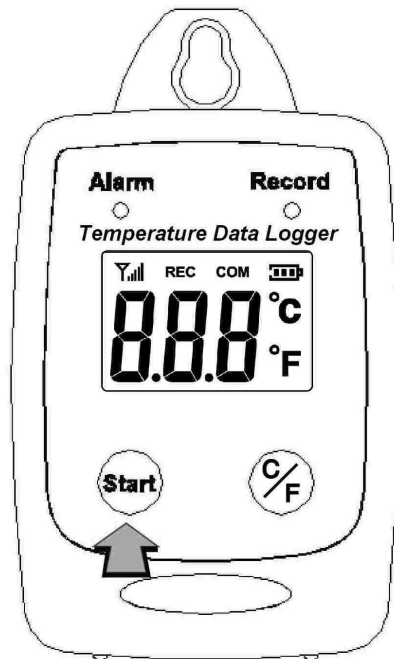
- Press °C/°F to switch between °C or °F



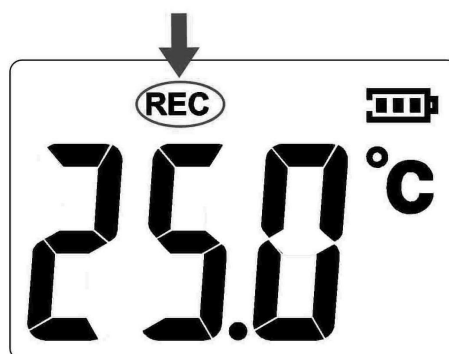
	
Display current Temperature(°C)	Display current Temperature.( °F)

## Recording Data

- Press the Start button to start data recording.

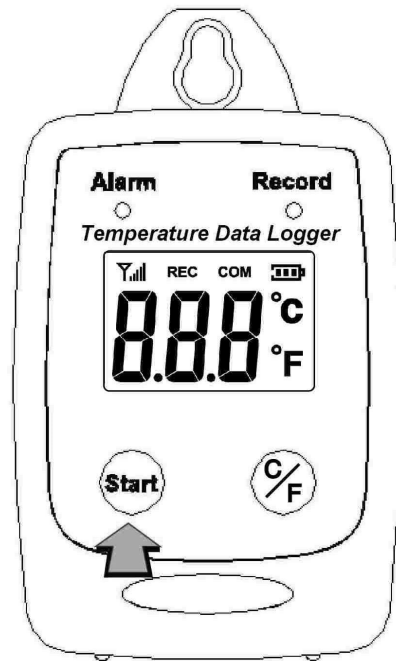


- The LCD display will display REC and the LED green light twinkle when the **Temperature Data Logger** is recording.

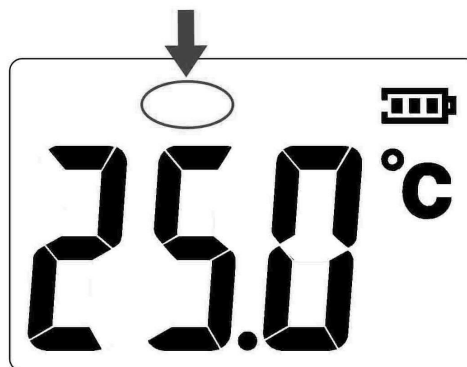




- Press the Start button again to stop recording.



- When recording stopped, the REC will disappear.



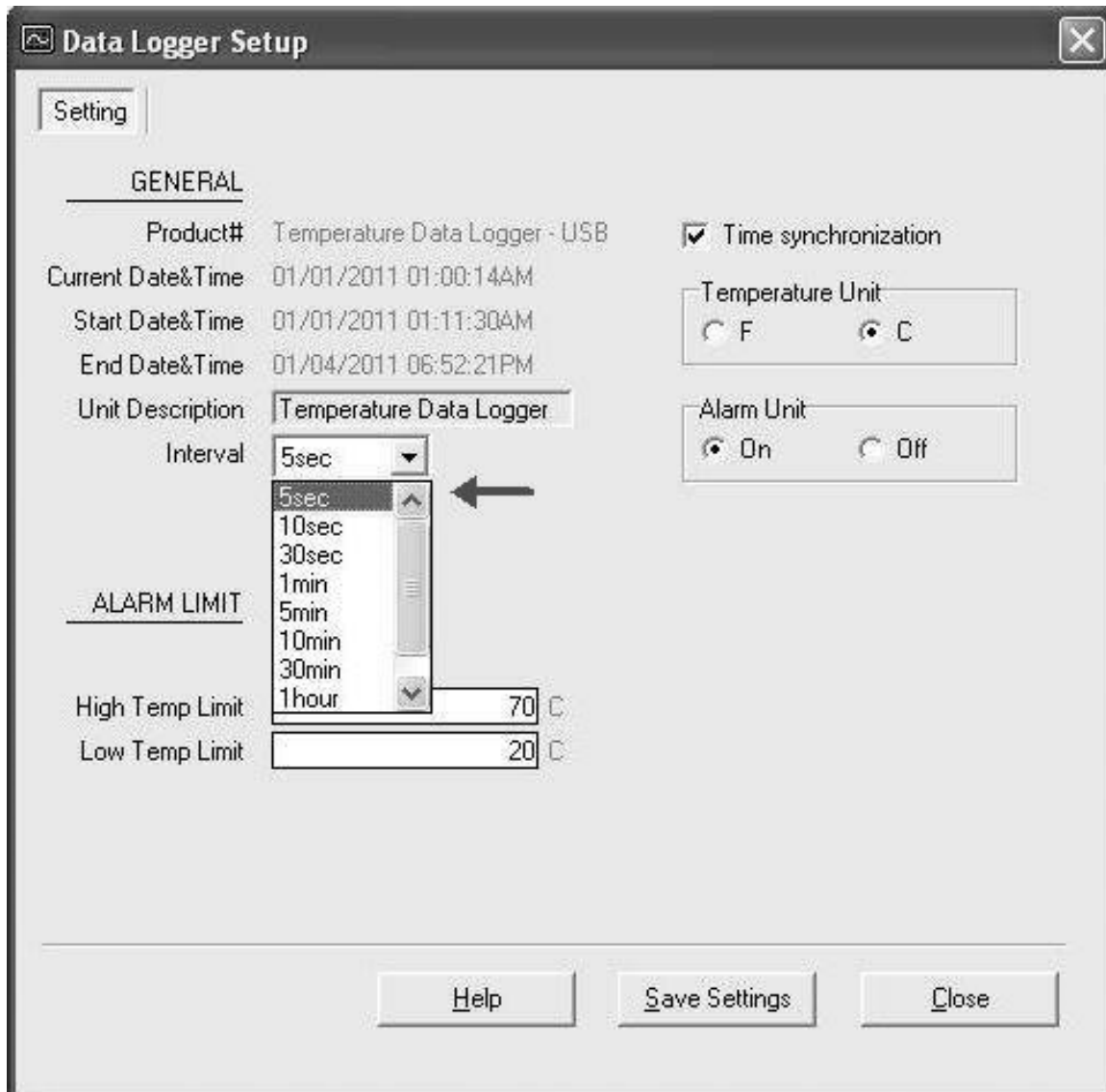
## Sampling rate

(5sec / 10sec / 1min / 5min / 10min / 30min / 1 hour)

Data sampling rate can only be set from PC setup screen.

Select the time interval from the drop-down menu.

Click “Save Settings” to save the setting.



## PC SOFTWARE INSTALLATION

### Installation Requirements:

#### Minimum system requirements for the software:

-Pentium III - 500 MHz processor or equivalent with 128 megabytes of RAM.

#### Optimal Performance:

-Pentium 4 - 2.8 gigahertz processor or equivalent with 256 megabytes or RAM.

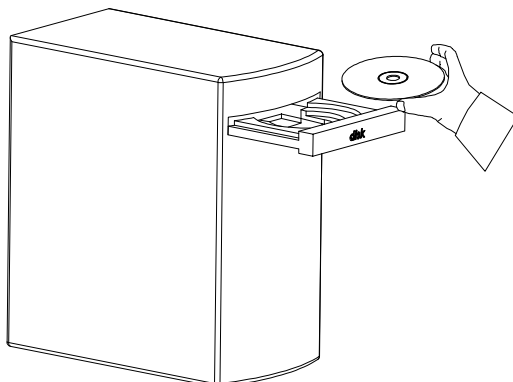
#### Operating System Requirements:

-Windows 2000

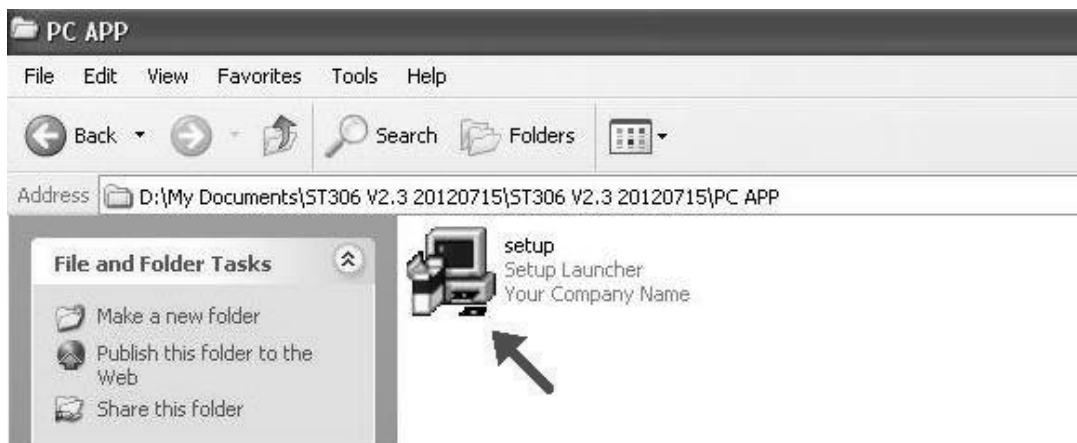
-Windows XP

-Window 7

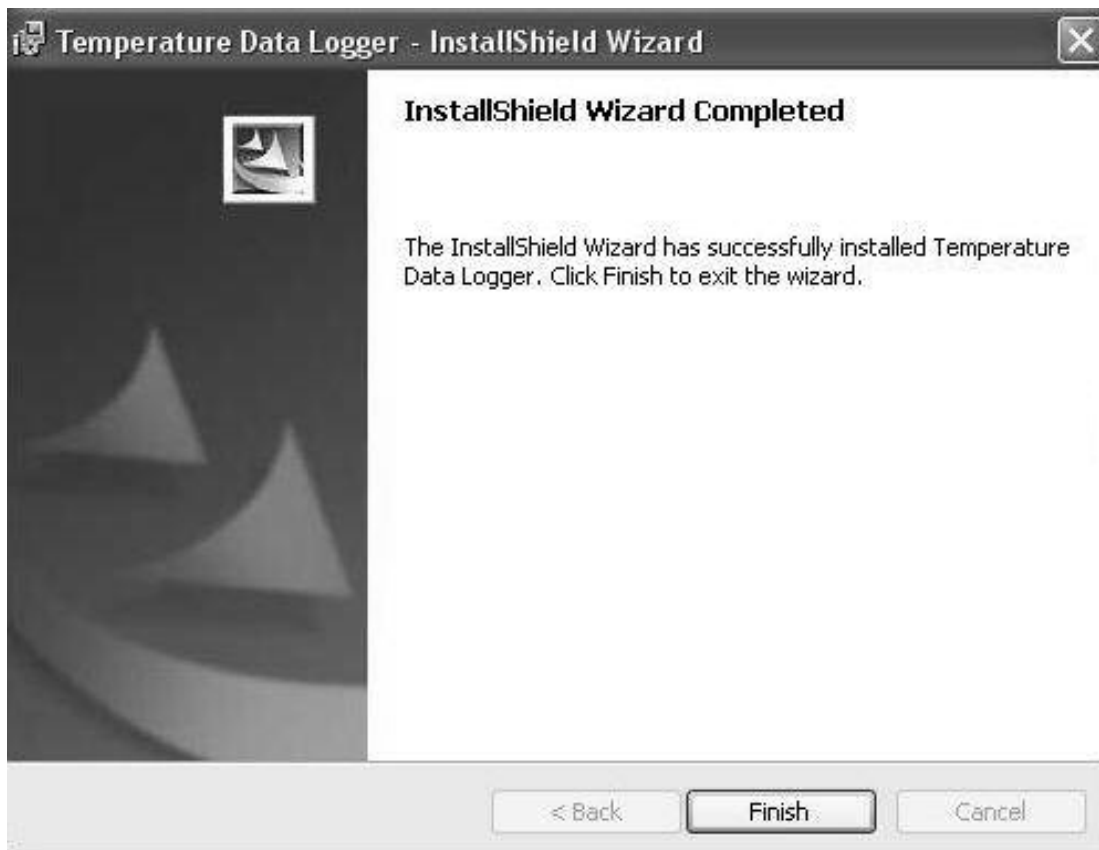
- Insert the CD into the disk drive.



- Click Setup to start installation.



Follow the steps on the Installation Shield Wizard and click Finish to complete the installation.

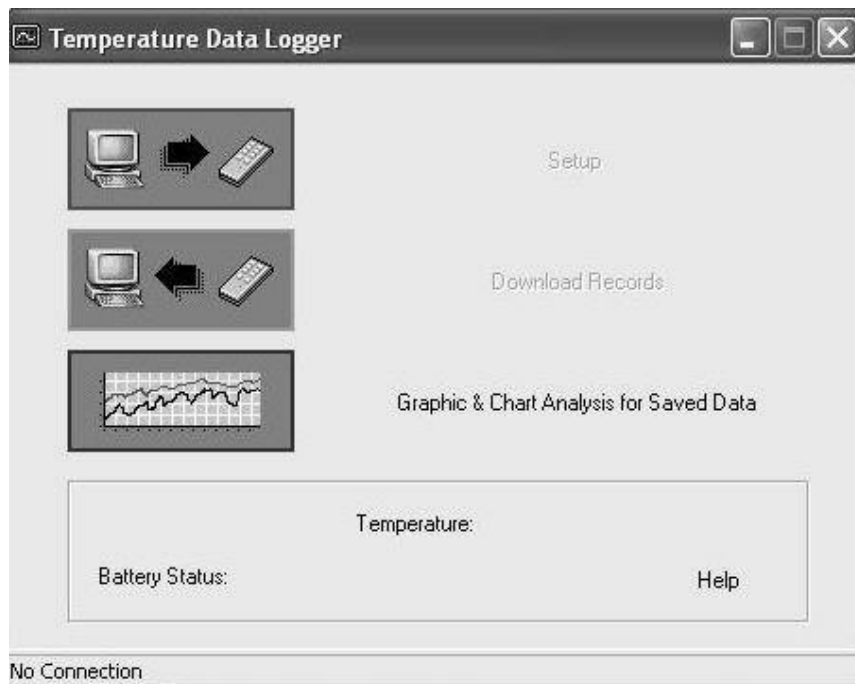


## USING PC SOFTWARE

- Start Window PC software.
- Click on All programs, Click on "Temperature Data Logger"
- Click on STLogger to start the datalogger program.

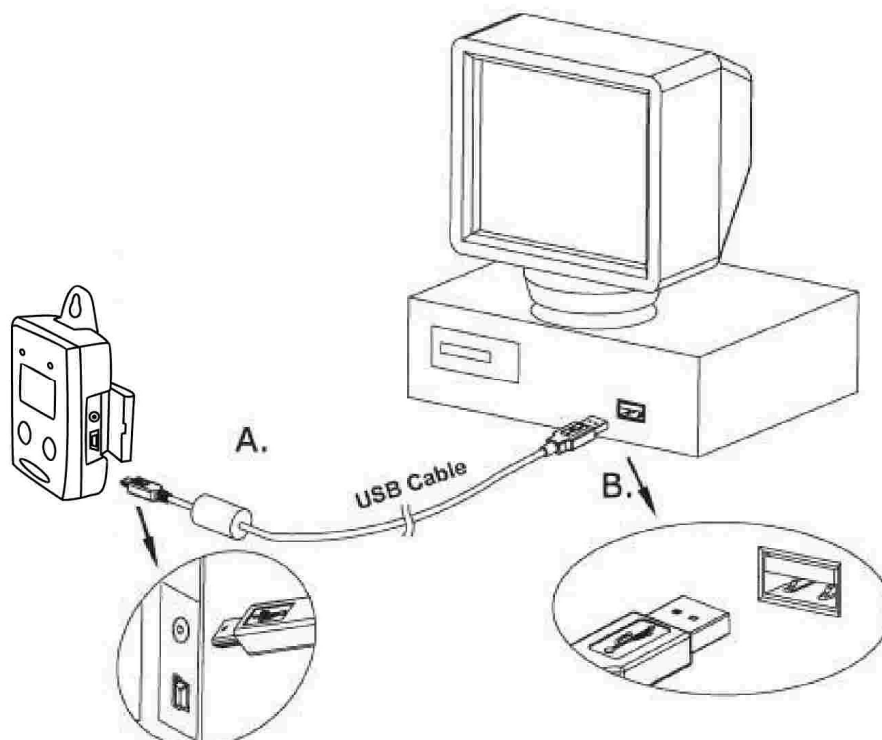


## Connection Status

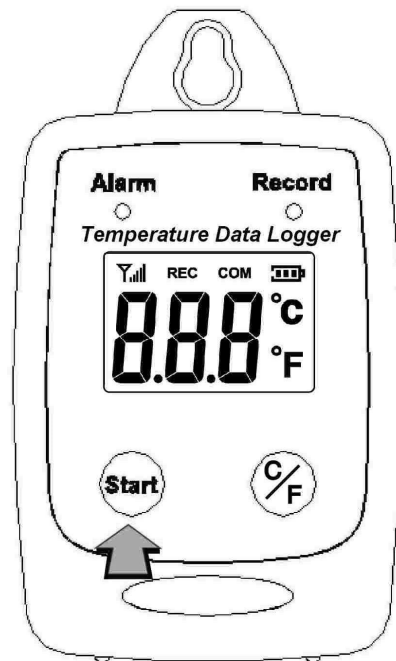


No Connection Screen

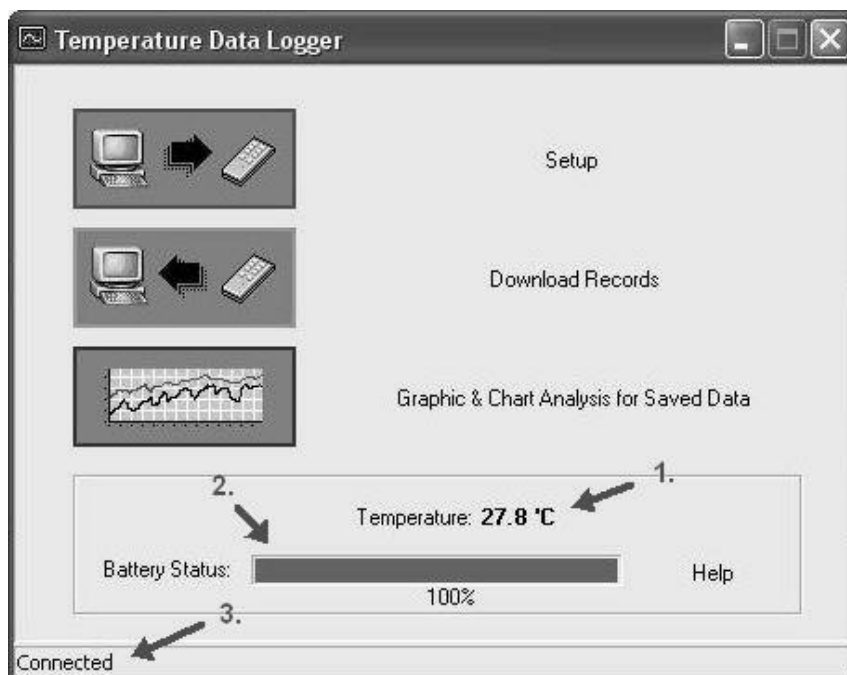
- Connect **Temperature Data Logger** to the PC with a USB cable.



- Press Start for 2 seconds to turn on Temperature Data Logger. **Temperature Data Logger** is now connected to the PC.



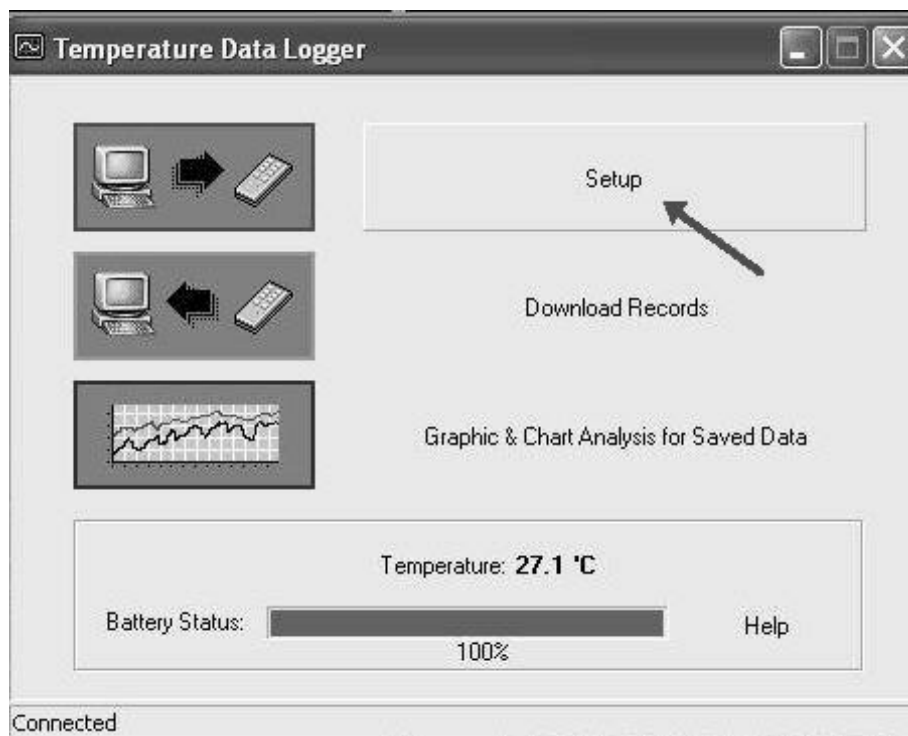
- If the datalogger is properly connected, these three values will show up.
  1. Temperature Reading
  2. Battery Status
  3. Display "Connected"



Connected Screen

## Setup Screen

Click "Setup" to enter the Setup screen.



- The values in the white area can be changed by the user.
- The value in the grey area can not be changed by the user.
- Click “Save Settings” to save the values to the datalogger.

**Data Logger Setup**

Setting

**GENERAL**

Product# Temperature Data Logger - USB  Time synchronization

Current Date&Time 01/01/2011 01:06:56AM

Start Date&Time 01/01/2011 01:11:30AM

End Date&Time 01/04/2011 06:52:21PM

Unit Description Temperature Data Logger

Interval 5sec

Temperature Unit  
 F  C

Alarm Unit  
 On  Off

**ALARM LIMIT**

High Temp Limit 70 C

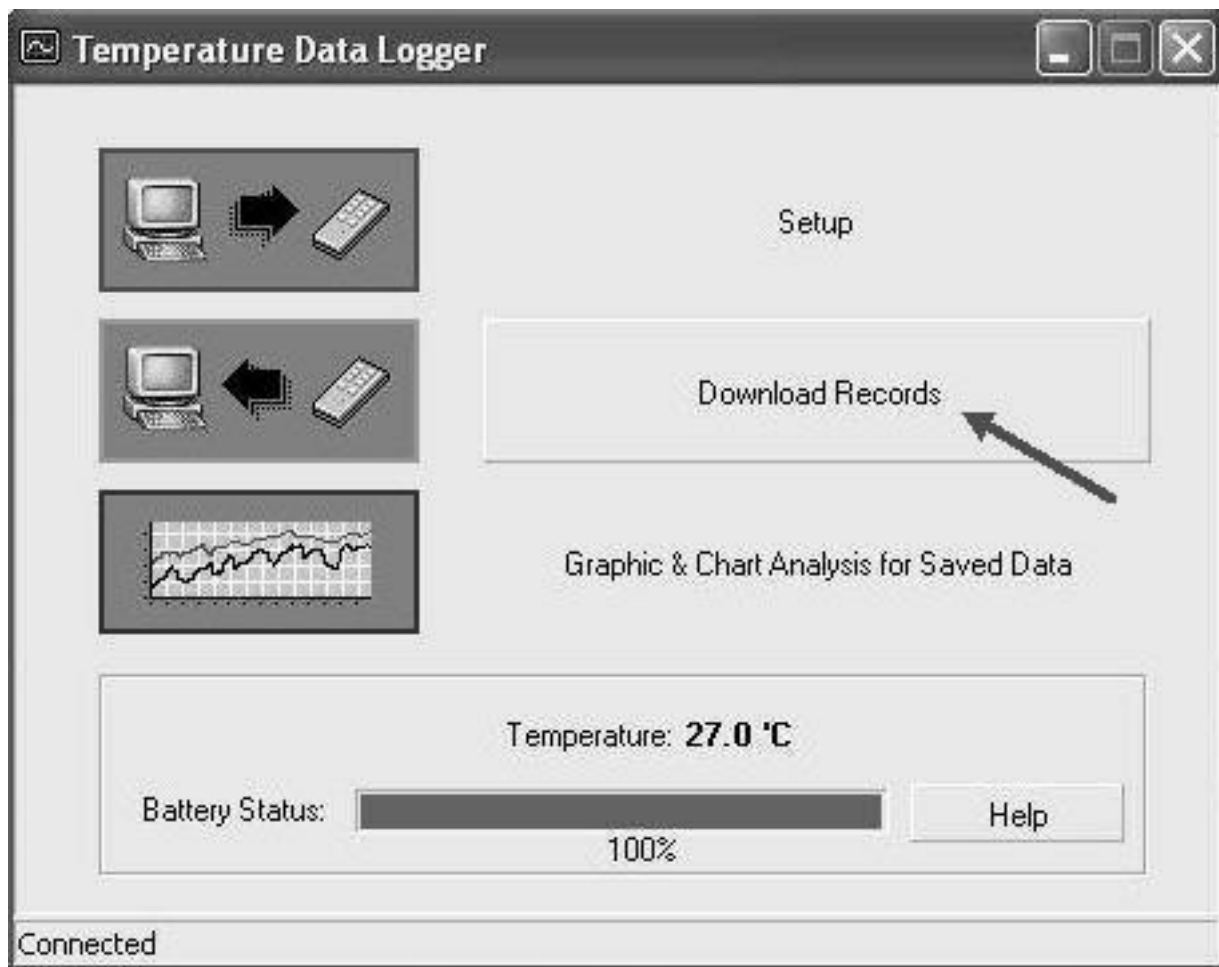
Low Temp Limit 20 C

Help Save Settings Close

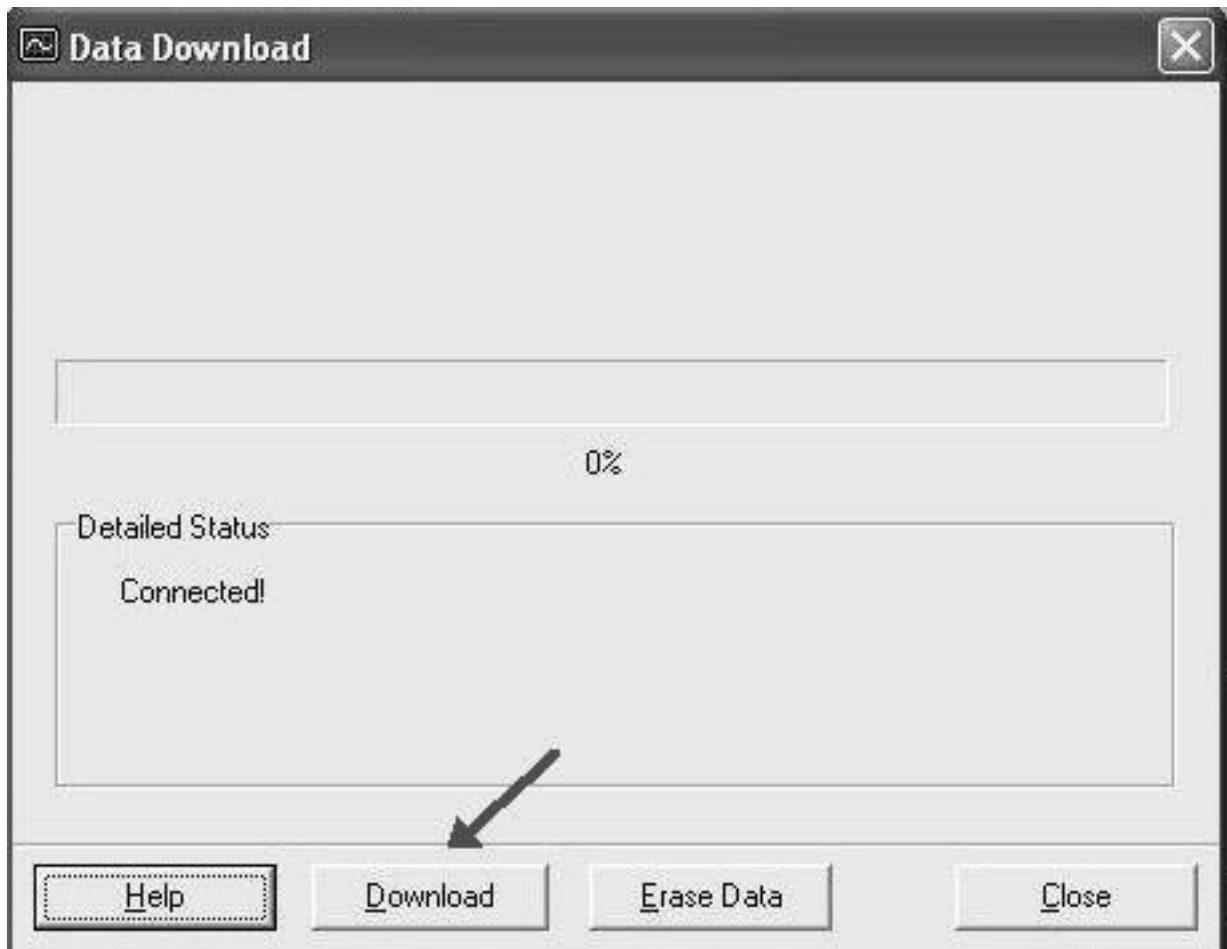


## Download Records

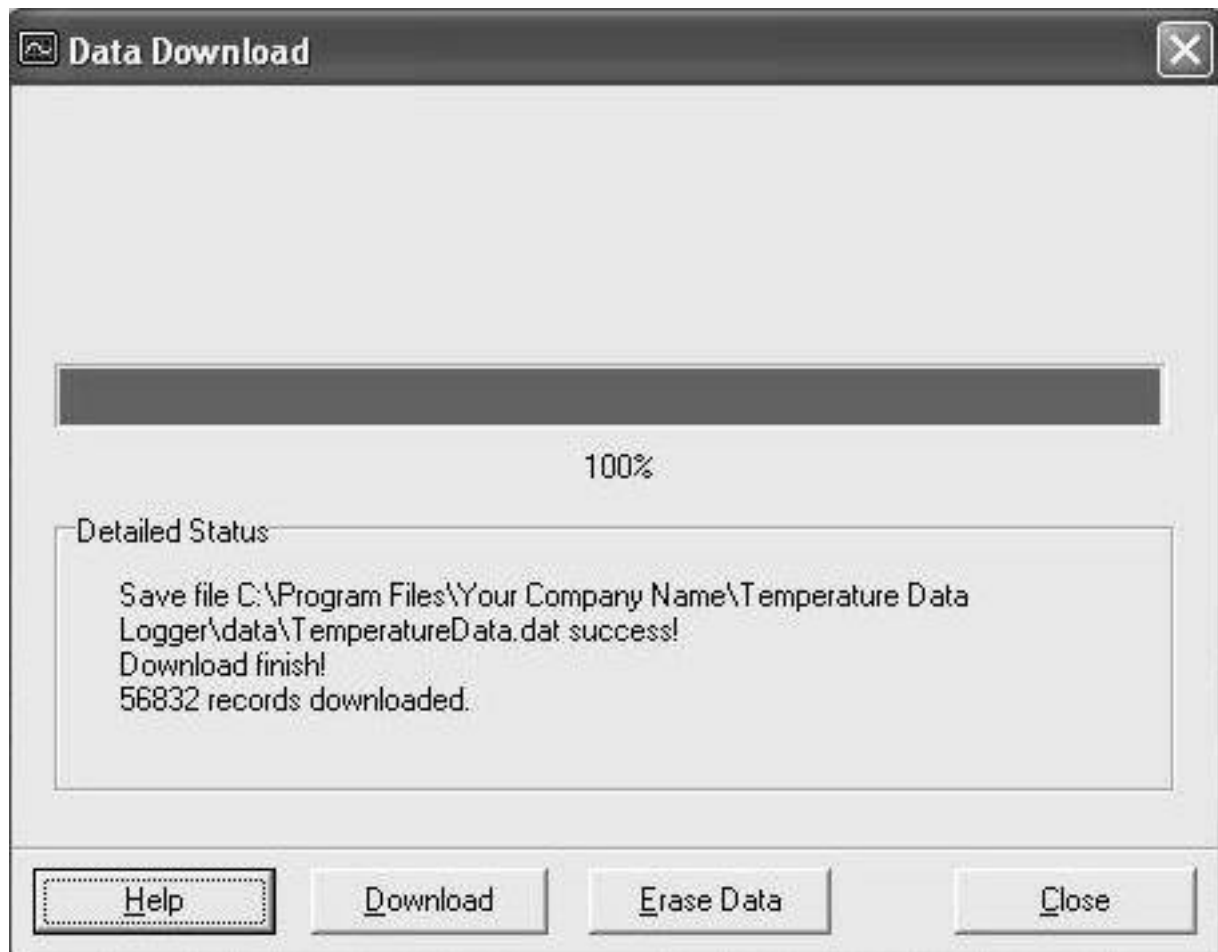
- Click Download to download the stored data.



- Click “Download” to start the download.

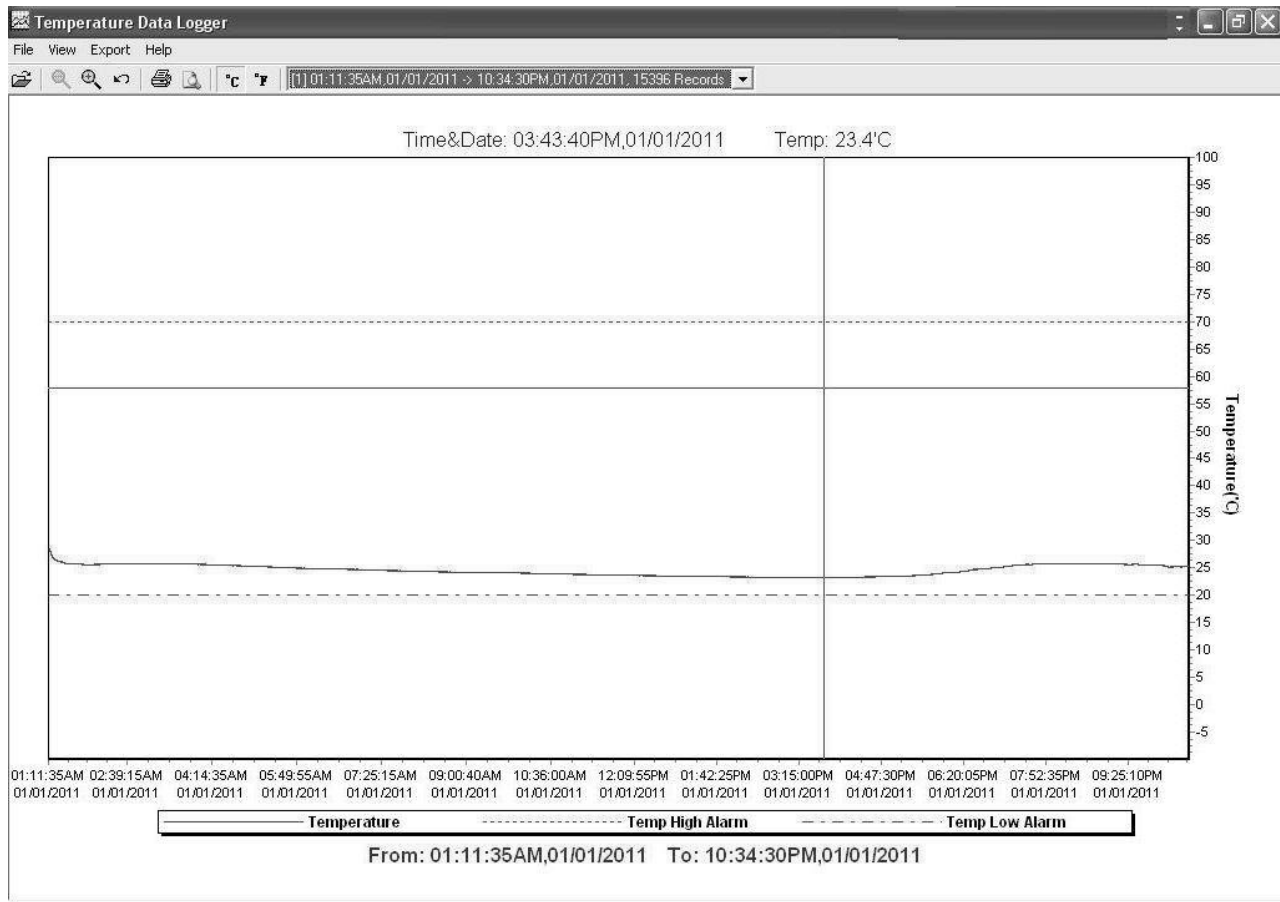


- Download Completed



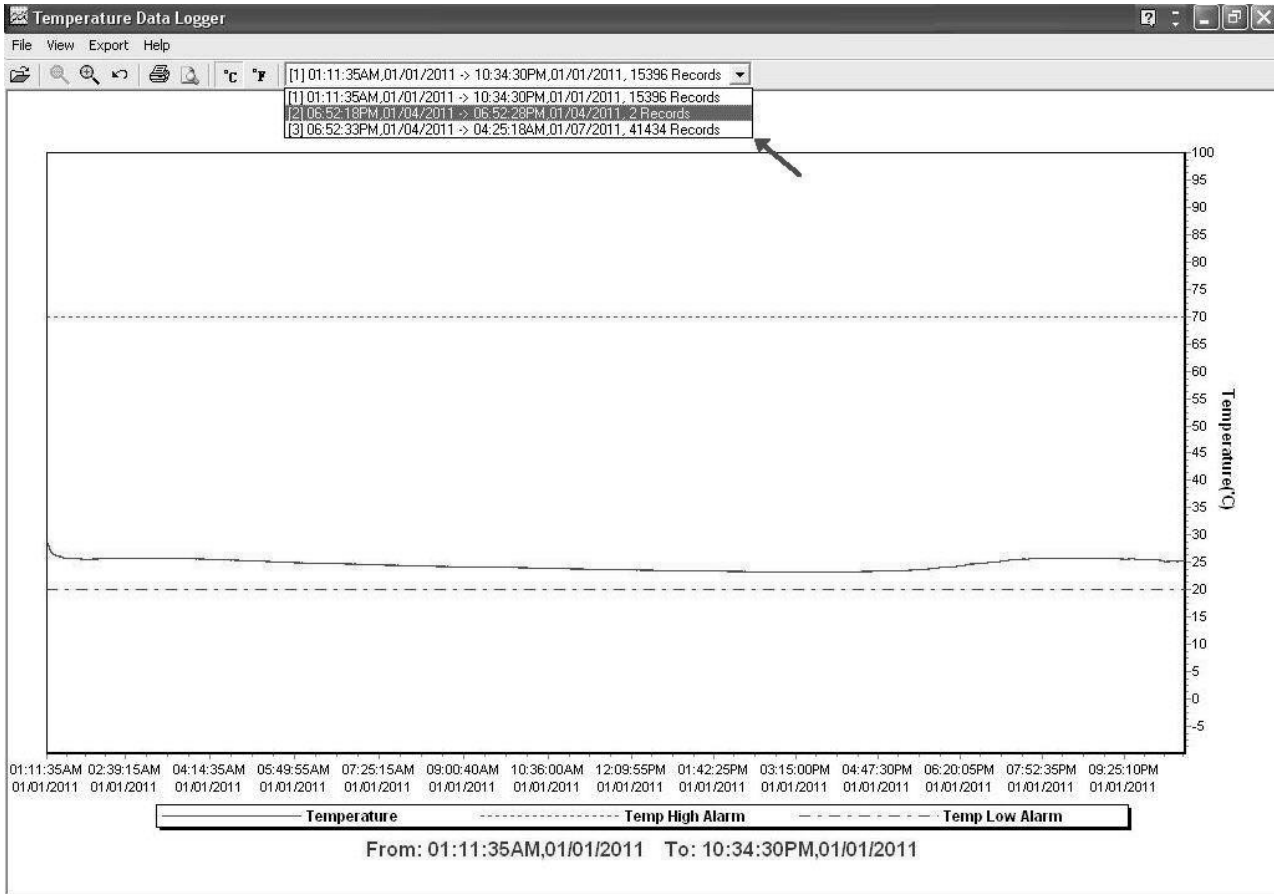
## Graphic & Chart Analysis

Downloaded data will first be displayed in graph format.



Each data groups are listed according to the date of the sampling. Lowest group number represents earliest sampling date.

- [1] 03:54:53PM,05/01/2012 -> 02:54:13PM,05/02/2012, 16553 Records
- [1] 03:54:53PM,05/01/2012 -> 02:54:13PM,05/02/2012, 16553 Records
- [2] 04:26:01PM,05/02/2012 -> 03:12:36PM,05/04/2012, 33680 Records



## Data in Listing Format

To display data in Listing format:

- Click File
- Click Chart Preview



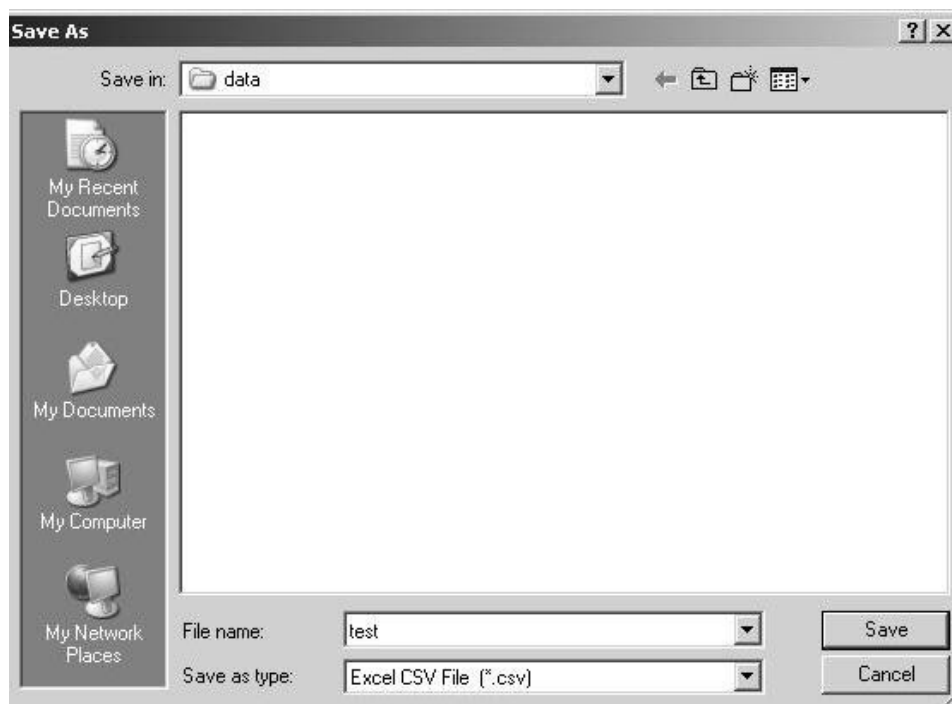
## Data Listing Format

Product Name: Temperature Data Logger  
Description: STLogger Record Data  
Start Data&Time: 06:52:18PM,01/04/2011  
End Data&Time: 06:52:28PM,01/04/2011  
Interval: 10 seconds  
Record Count: 2  
Temp Alarm High: 70.0 'C  
Temp Alarm Low: 20.0 'C

<u>No.</u>	<u>Time</u>	<u>Date</u>	<u>Temp('C)</u>	<u>Alarm</u>
1	06:52:18PM	01/04/2011	33.2	
2	06:52:28PM	01/04/2011	33.5	

## Data Export

Select export data type: Text or Excel CSV.



Click Save to save the file in .CSV/Text format.



File Saved.