

Technical Specifications

Specifications	
Particle Size	0.3µm, 0.5µm, 1.0µm, 3.0µm, 5.0µm, 10.0µm(6-Channel)
Reference Standard	ISO 21501-4-2018
Counting Efficiency	0.3µm ≥ 50%; 0.5µm:100%
Sampling Flow	2.83L/min(±5%), 0.1CFM
Particle Distribution Error	≤ ±30%(0.5µm and 5.0µm)
Particle Concentration Error	≤ ±30%FS(0.5µm)
Relative Error of Repeatability	≤10%
Purge Time	≤10min(Continuous 0 for 2 times in 10 minutes; 95% of reliability)
Maximum Sampling Concentration	2,000,000/L
Sampling Time	5s~6h
Sampling Points (Location)	1000
Sampling Times	1000
Sampling Delay	5~240s
Time Interval	5~240s
Counting Modes	Cumulative; Differential concentration/counting
Temperature (Range)	±0.5℃ (-10℃~50℃)
Relative Humidity (Range)	±5.0%(0.1%~99.9%)
Dew-Point Temperature (Range)	±0.5℃ (0℃~50℃)
Data Storage	10000
Working Time	About 5h
Working Environment	0~50℃, 0~95% (Non-condensation)
Storage Environment	-30~50℃, 0~95% (Non-condensation)
Safety Standard	EN61326-1:2021(Class A) EN60825-1:2014
Characteristics	
Power Supply	7.4V polymer li-ion battery
Product Size	290×103×62mm
Product Net Weight	About 710g
Standrad Accessories	Laser Particle Counter*1, Toolbox*1, User Manual*1, Download Guide of Common Files, USB Cable, Purge Filter, Sampling Tube, Hand Strap
Standard Quantity Per Carton	1pc

Applications



UNI-TREND
TECHNOLOGY









meters.uni-trend.com



UT337B

Laser Particle Counter



UT337B can measure the quantity and size distribution of airborne particles in real time, featuring six-channel synchronous detection for precise monitoring. With a built-in storage capacity of 10,000 records, it supports photo-linked documentation and offers dual-mode WiFi/USB connectivity, enabling one-click generation of ISO/EU and GMP sampling reports. It is the ideal tool for monitoring indoor air quality and cleanliness levels.



Multiple Sampling Modes



Photo Capture



PDF Report Export



WiFi/USB Connectivity



Temp. & Hum. Detection

Color HD Backlit Screen



Audible and Visual Alarm

Triggers LED and buzzer alerts when thresholds are exceeded.



Integrated Camera and Flashlight

Allows environmental snapshot attachment per measurement



Hand Strape Design

Engineered for enhanced grip comfort and operational stability.



Data Storage

Provides a data foundation for process traceability and trend analysis.



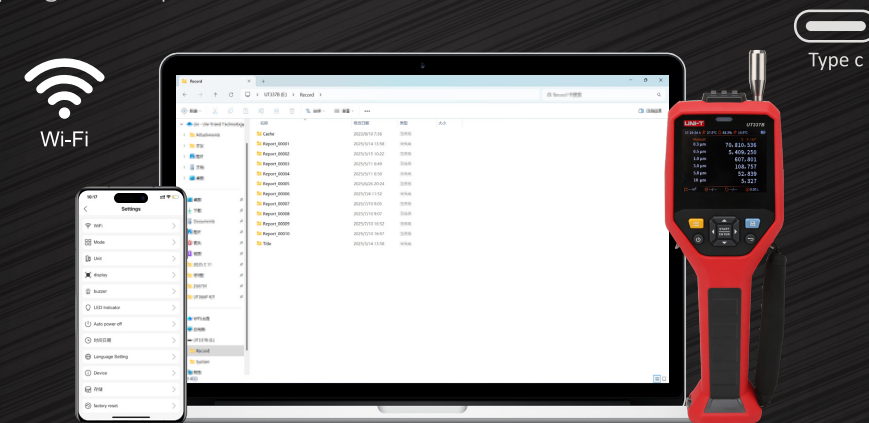
Cleanliness Level Classification

Define the required cleanliness level, then assess pass/fail status according to sampling data.

***ISO 14644-1:**
CLASS 4~9
***EU GMP: A~D**

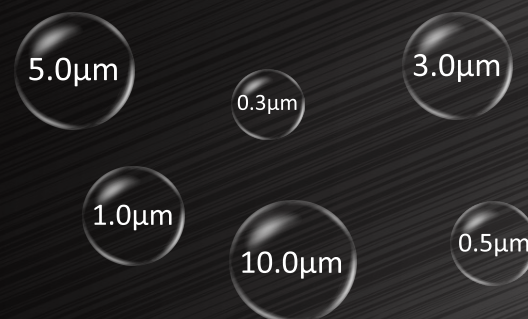
WiFi for mobile APP, Type-C for PC

Supports sampling data export as PDF and CSV



6-Channel Measurement

Simultaneous measurement of 6 distinct particle sizes.



Built-in Temperature & Humidity Sensor

Enable multidimensional environmental data analytics.



Temperature Humidity Dew Point

Multi-Mode Sampling

Adapts to different cleanliness testing scenarios.

Mode	
Mode 1 (Continuous)	<input checked="" type="radio"/>
Mode 2 (Auto)	<input type="radio"/>
Mode 3 (Manual)	<input type="radio"/>
Mode 4 (ISO 9)	<input type="radio"/>
Mode 5 (GMP B In Operation)	<input type="radio"/>
Mode 6 (Filtration efficiency)	<input type="radio"/>
Mode 7 (Zero Count)	<input type="radio"/>

Supports Switching between 9 languages.

